



METRICCHANT

DESIGN ATTRIBUTES PVT. LTD

planning architecture landscape backdrops interiors graphics

**SELECTED
PROJECTS**

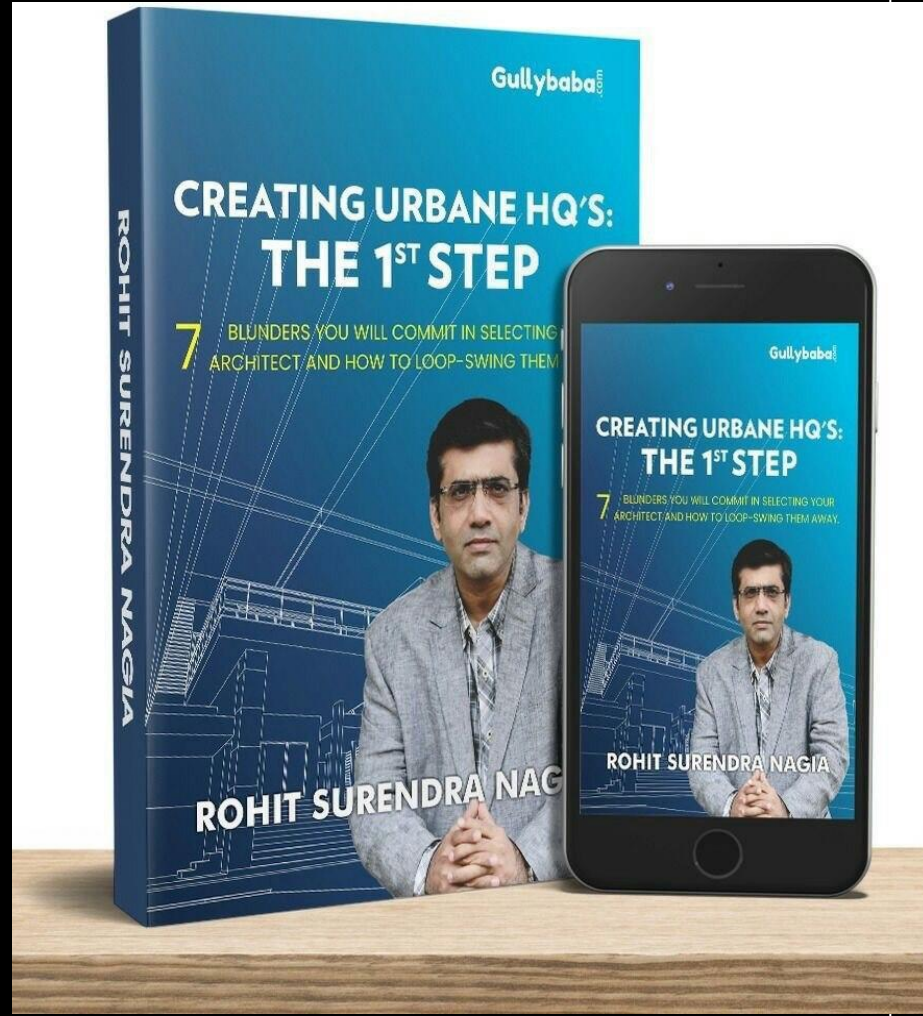
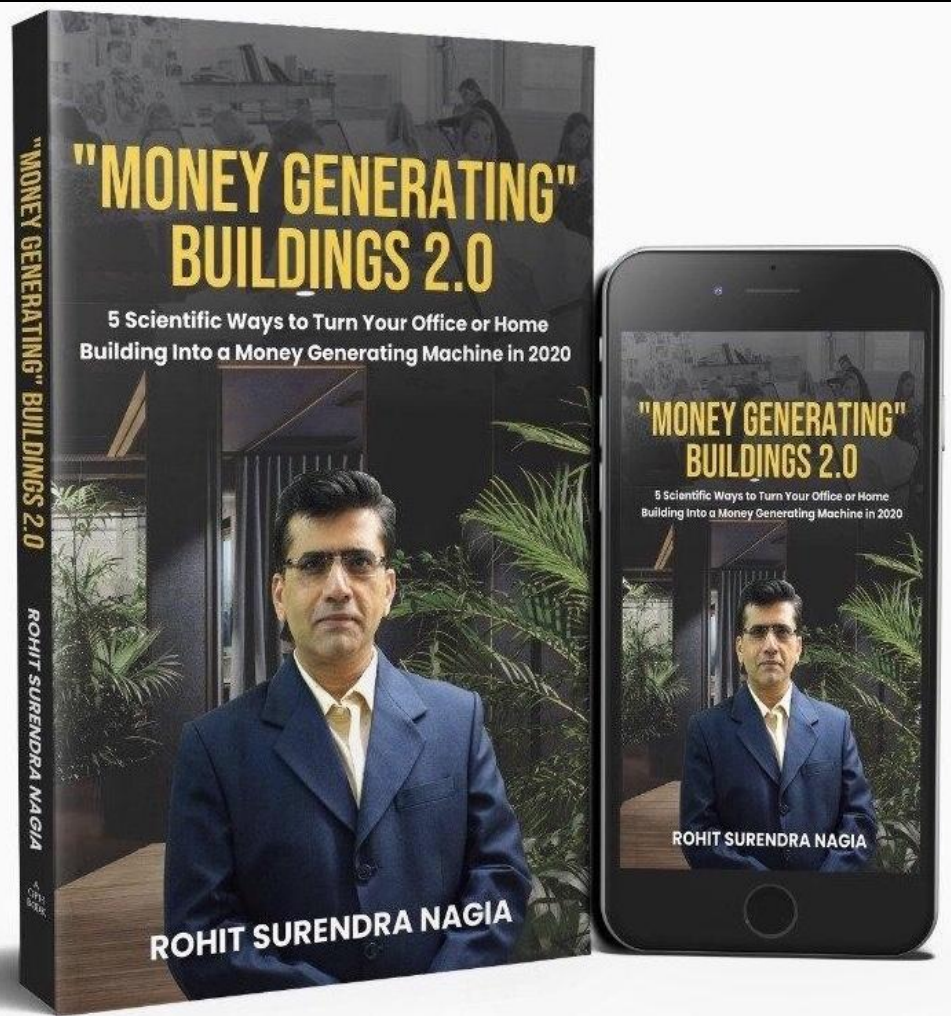


- APARTMENTS
- FACTORY
- HOTEL
- OFFICE
- STUDIO APARTMENT
- HOSPITAL
- WEDDING SETS
- COMMERCIAL
- CORPORATE
- RESIDENTIAL
- SHOWROOMS
- FARM HOUSES
- BANQUET HALLS
- RESTAURANTS



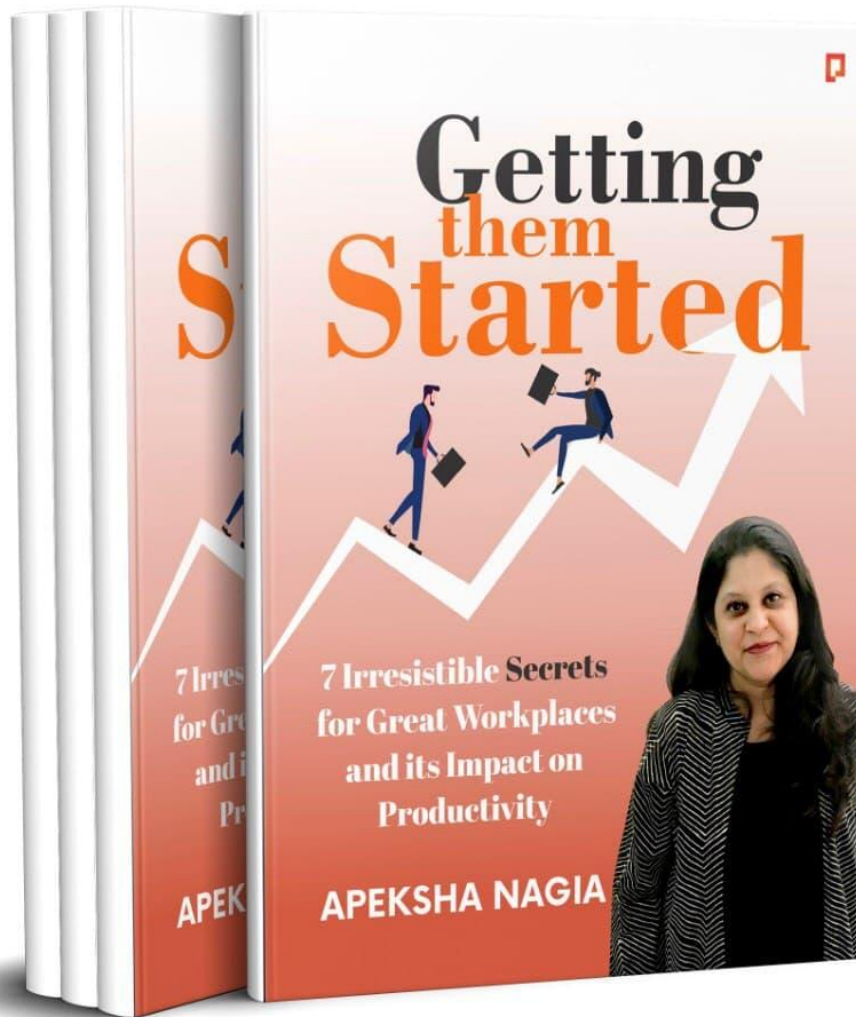
MDAPL FOOTPRINT



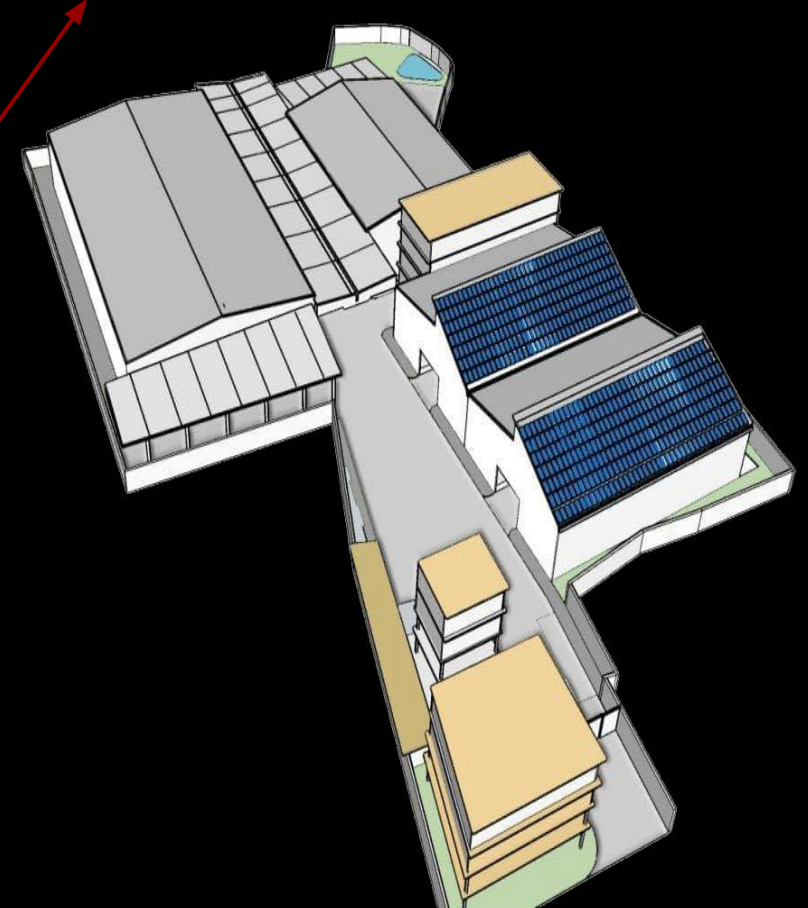
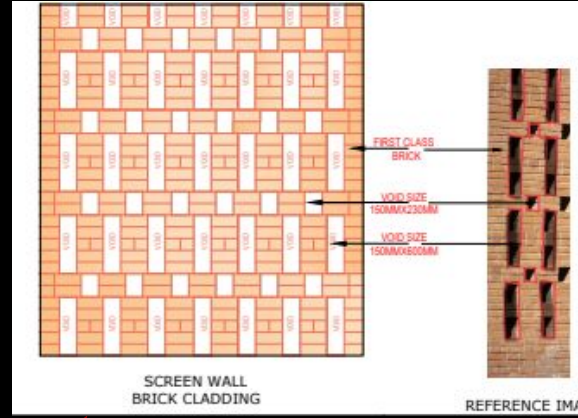




 **Pendown Press**



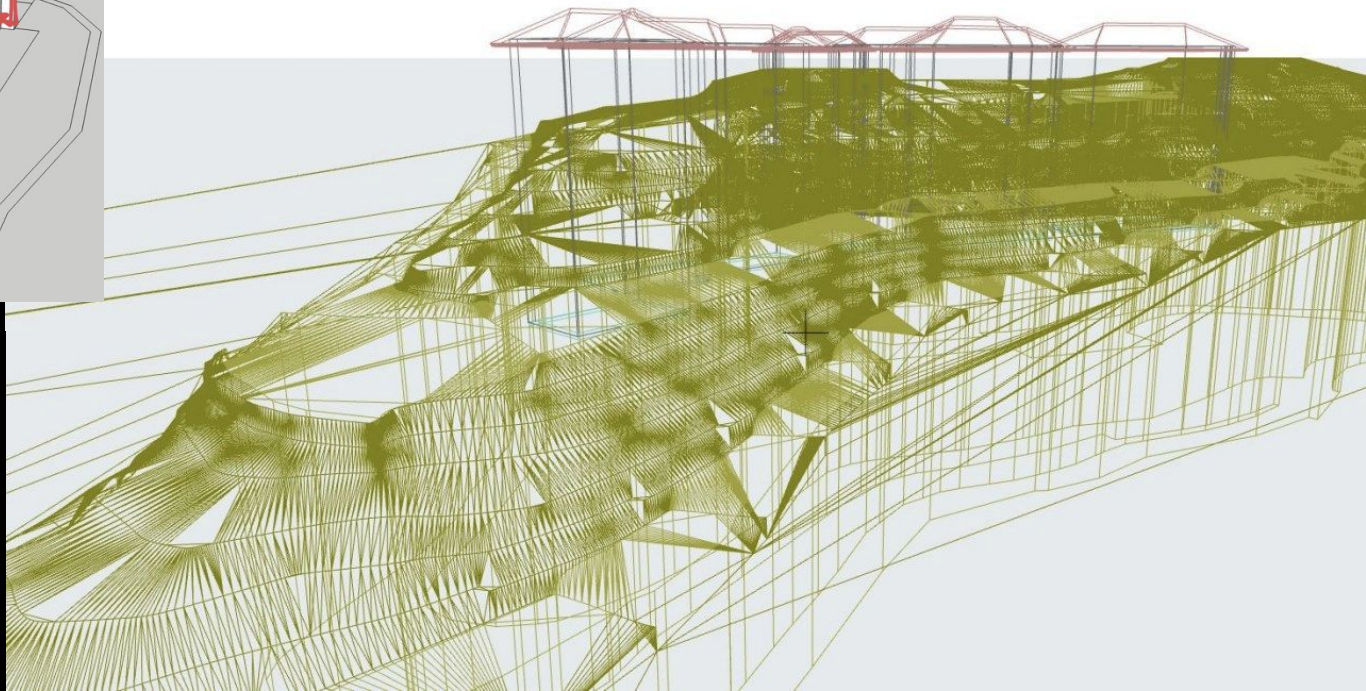
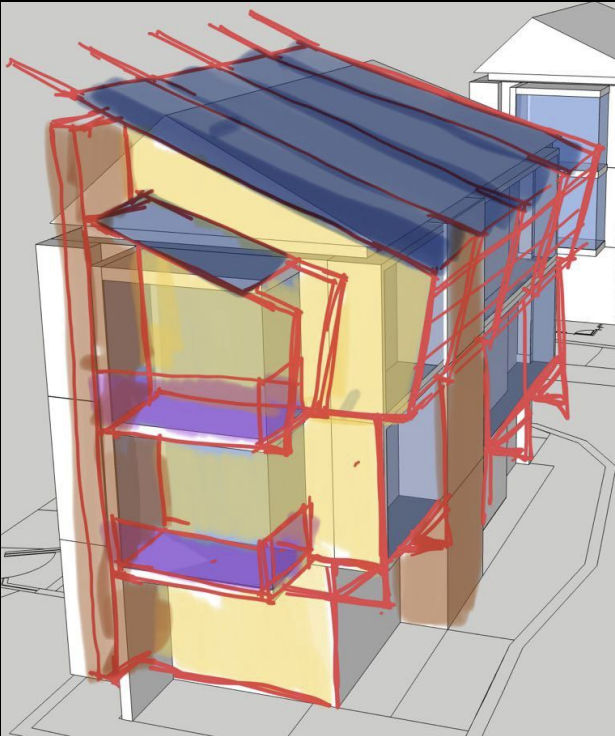




ASTREVUE RESORT, NAINITAL - (2.33 ACRE CAMPUS) (2020-Ongoing)...on the drawing board...



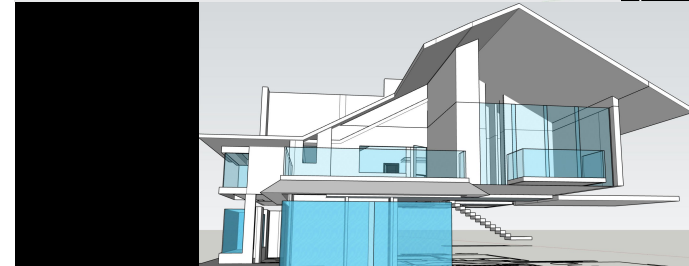
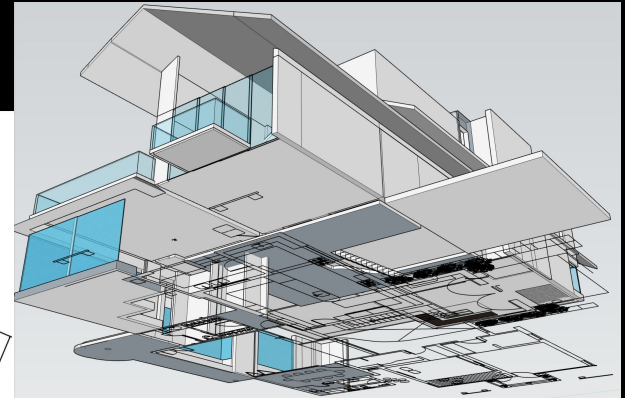
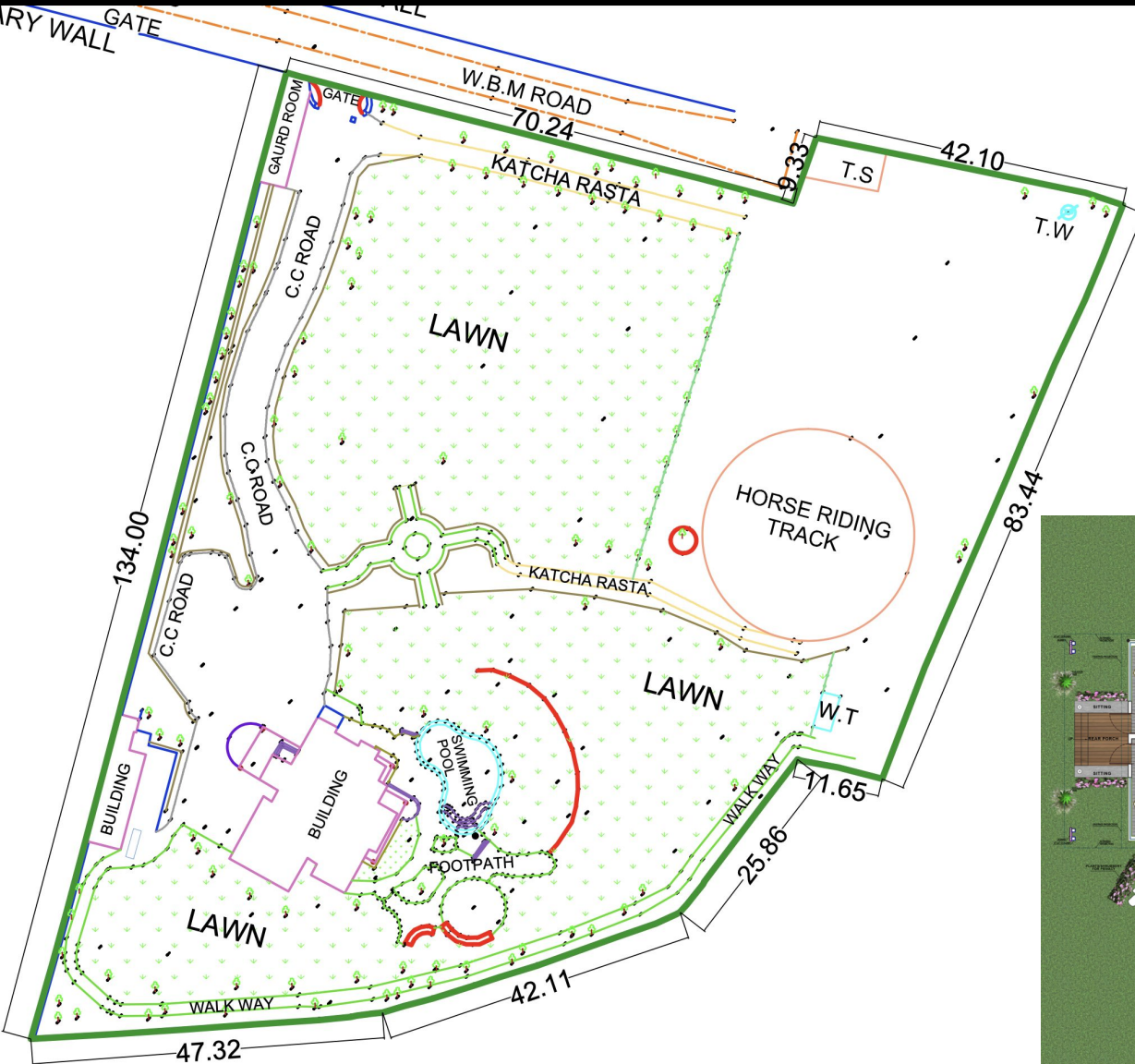
Sustainable Green Campus
Self Reliant
Net Zero Mission.
Expanding to Double Capacity



FARMHOUSE - CHATTERPUR - (2.93 ACRE) (2021-Ongoing)...on the drawing board...



Sustainable Green Campus
Self Reliant
Net Zero Mission.

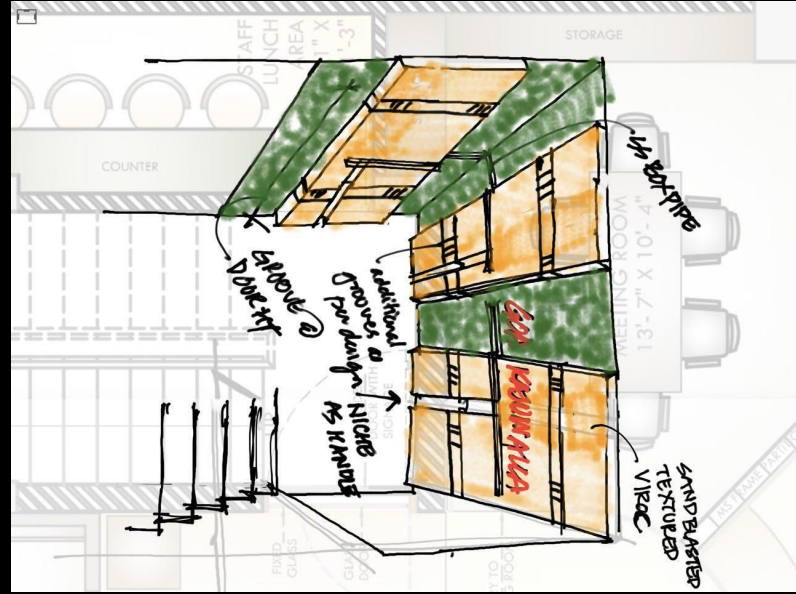


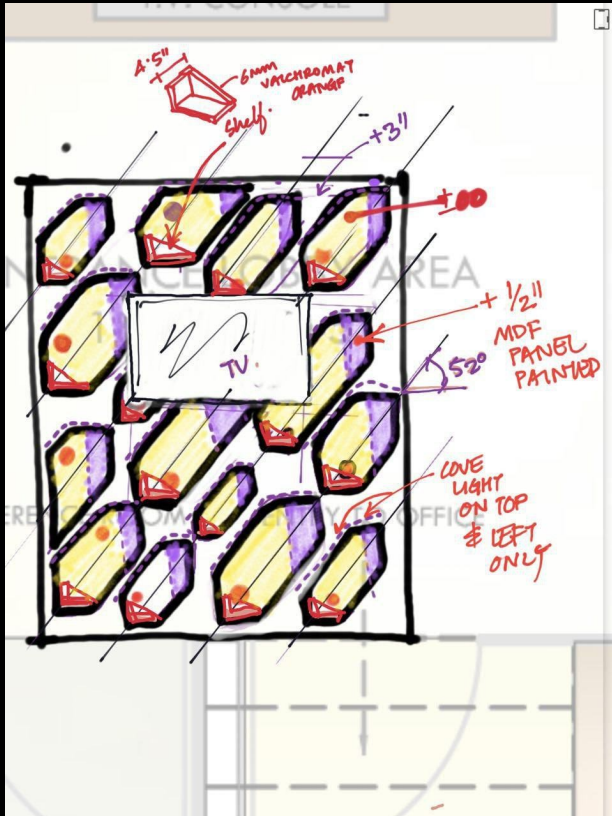
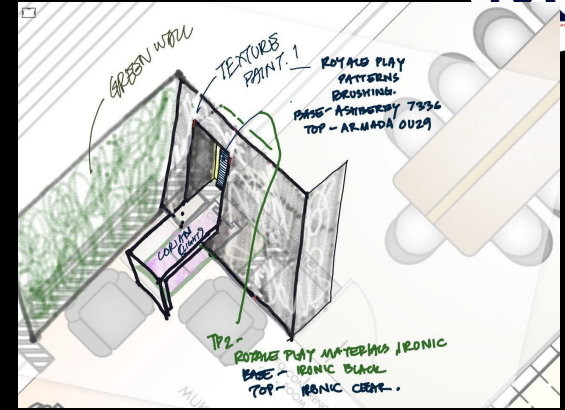
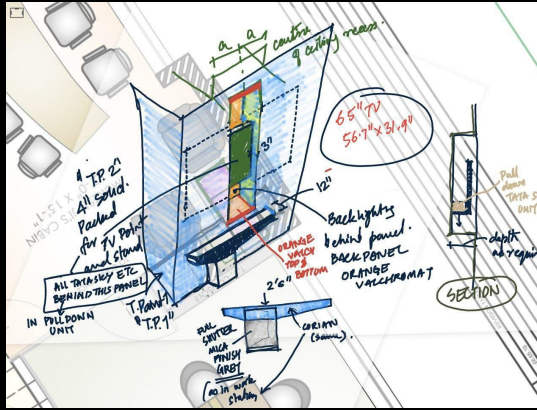
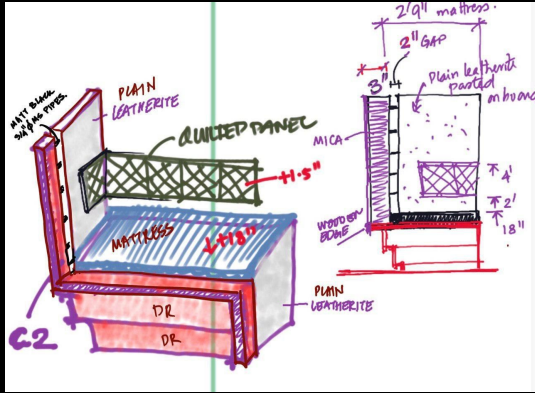




Raw Concrete
Exposed Brickwork
And Textured White



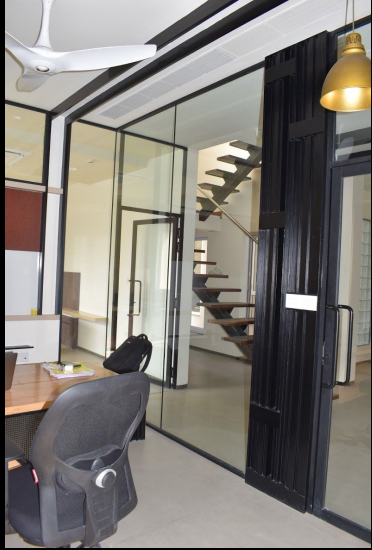
























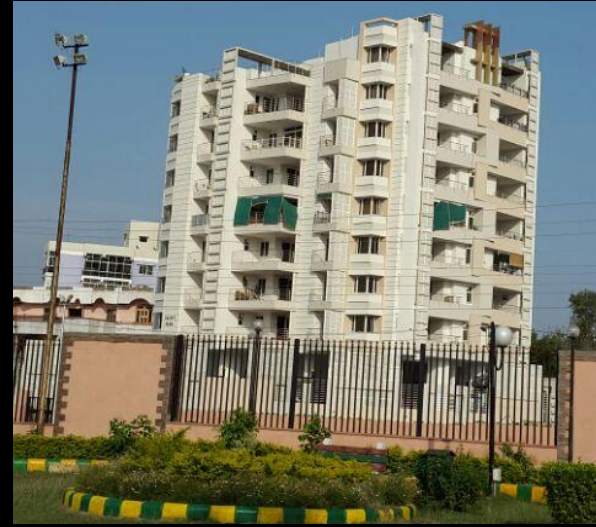


COMMUNITY SPACE MAXIMISED AND ENCOURAGED BY PROVIDING GREENS, PLAY GROUND AND PARKING ON GROUND LEVEL. LEVEL RAISED TO GIVE THE LAKE-VIEW TO ALL UNITS.





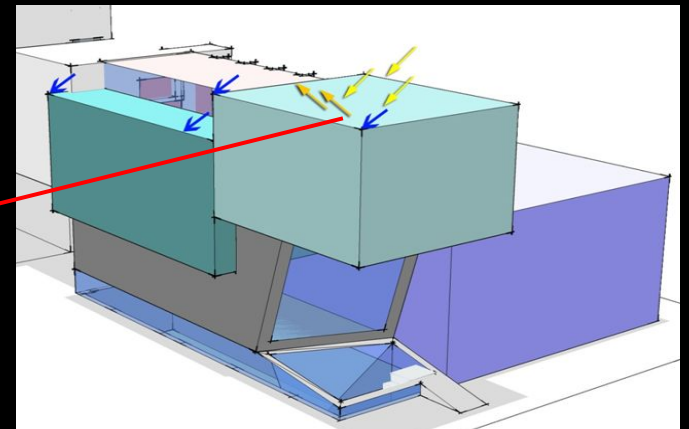
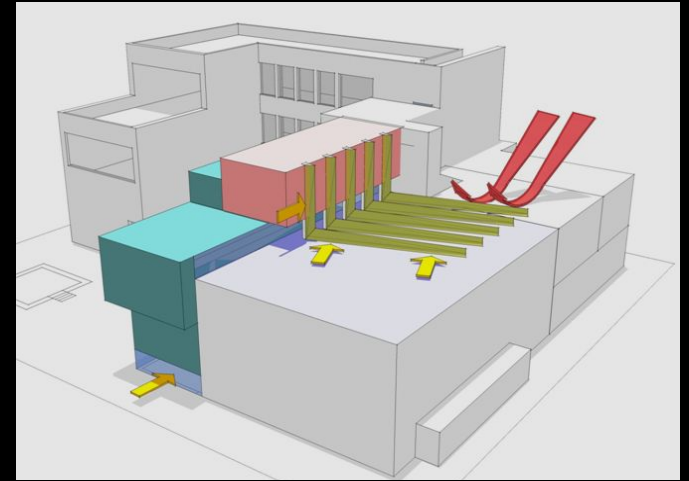
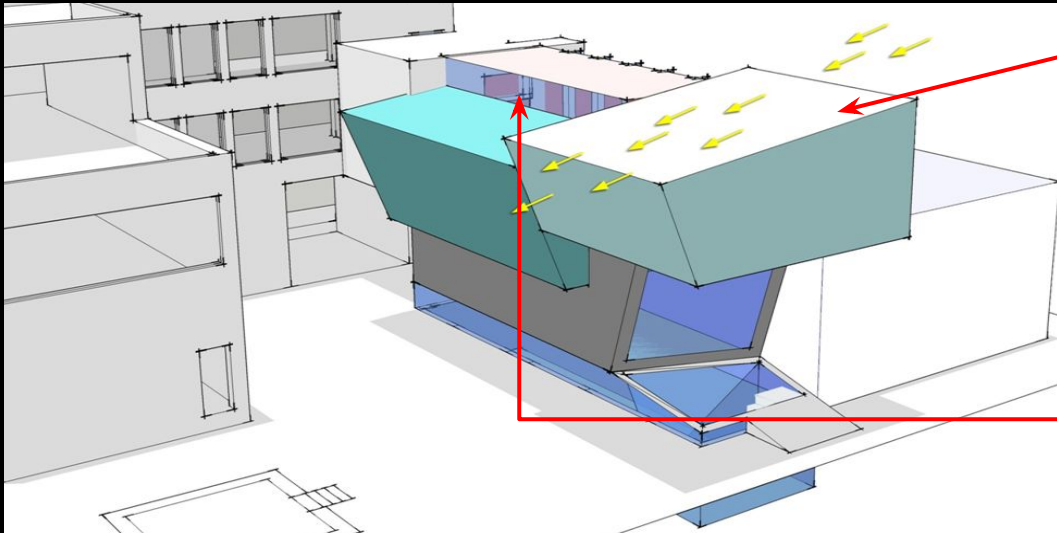




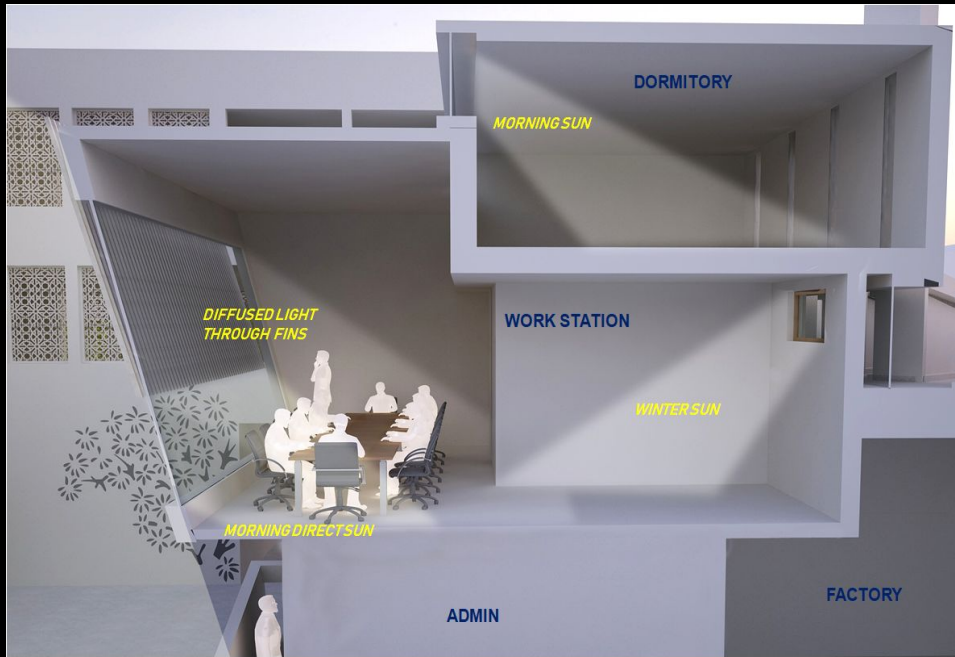




DISPLACEMENT OF BLOCKS TO GET NATURAL LIGHT INTO THE BASEMENT AND UPPER FLOORS OF THE BUILDING.



THE ROOF OF SON'S CHAMBER AND WORKSHOP ARE TAPERED TO ACHIEVE MINIMUM SOLAR GAIN. HINDERED VISION OF THE VISITORS TO DORM.



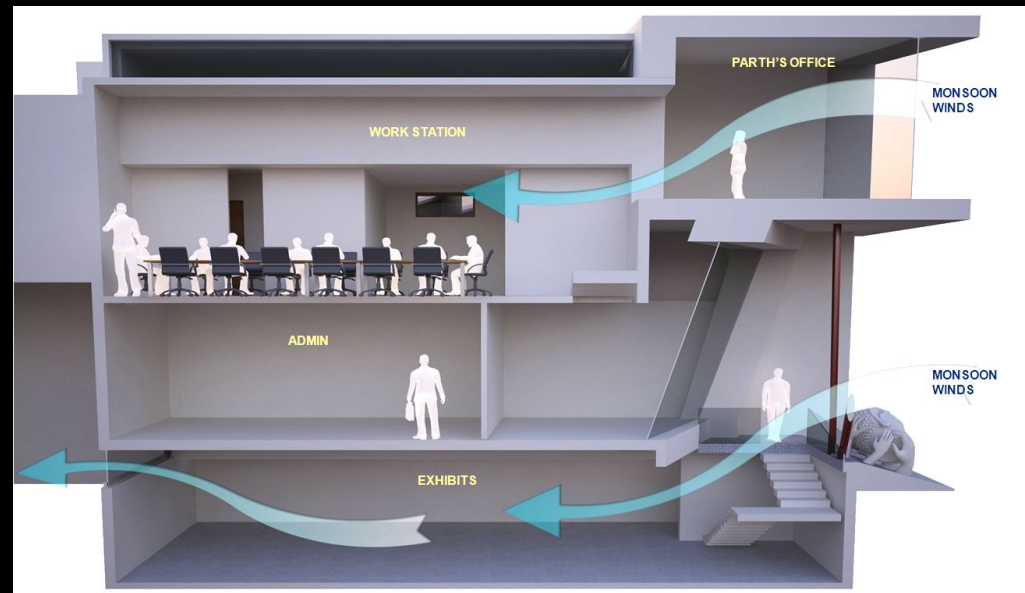
COOL/PLEASANT MONSOON WINDS THROUGH PARTH'S OFFICE TO WORKSTATION AREA. AND ON GROUND FLOOR INTO EXHIBIT AREA.

VIEW FROM EACH SPACE AND HIERARCHY OF FUNCTION CONTROLLED BY PLACEMENT OF BLOCKS HELPS IN CONTROLLED SUPERVISION.

PROVISION OF NORTH LIGHTS IN THE FACTORY AND ALSO DIFFUSED LIGHT ENTERS THE DORMITORY.

DIRECT SUNLIGHT FROM SOUTH WEST IS AVOIDED.

POST NOON, SUNLIGHT SLIDES THROUGH THE TAPERED ROOF THAT REDUCES THE HEAT GAIN.





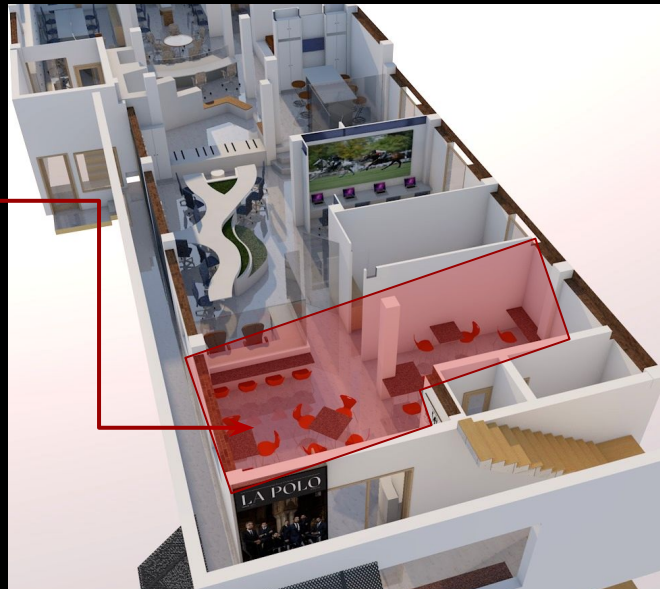
ENHANCED VISUAL CONNECTION - EFFICIENT WORK NETWORK



CENTRALLY PLACED LIBRARY COMBINES SPACES VISUALLY, YET KEEPS THEM FUNCTIONALLY SEPARATE. IT ALSO ALLOWS FOR TWO DIFFERENT COMPANY OFFICES, IN SPACE OF ONE.



CORPORATE OFFICE FOLLOWED BY A CAFETERIA AT THE ENTRANCE- INCREASES FOOTFALL.. SELF- SUSTAINED OFFICE THAT WELCOMES OUTSIDERS.

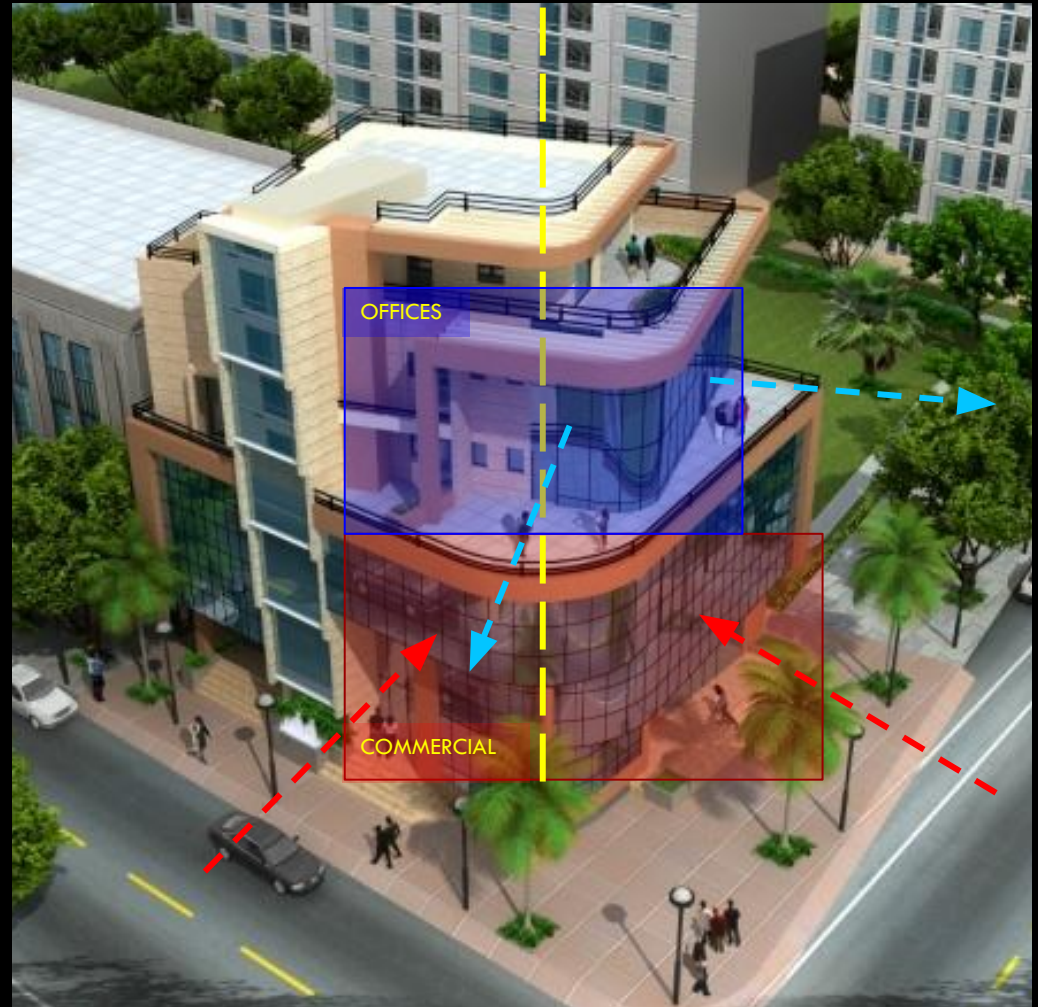
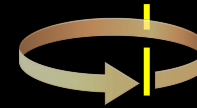


EASILY CONVERTIBLE SPACES.





VIEW OF COMMERCIAL PART OF BUILDING FROM STREET.
OFFICES TURNED ABOUT STRUCTURAL AXIS TO
MAINTAIN PRIVACY YET PROVIDE
AN EXPANSIVE VIEW OF
THE OUTDOORS.





MADE IN KEEPING WITH THE EXISTING STRUCTURE, THE DESIGN FOLLOWS AND ENCOURAGES LOCAL ARCHITECTURE STYLES OF THE PROJECT LOCATION.





THE PROJECT GAVE SCOPE FOR USE OF LOCAL CRAFT AND SKILL.

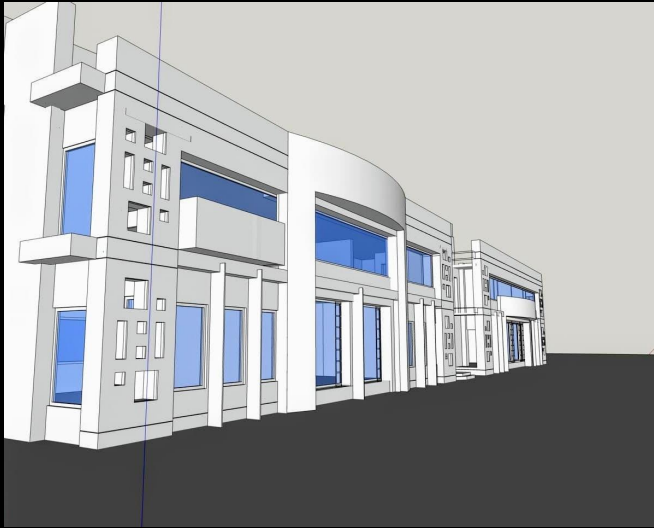
JALI WORK IN INTERIORS- SYMBOLIC OF ARCHITECTURE STYLE IN JAIPUR.

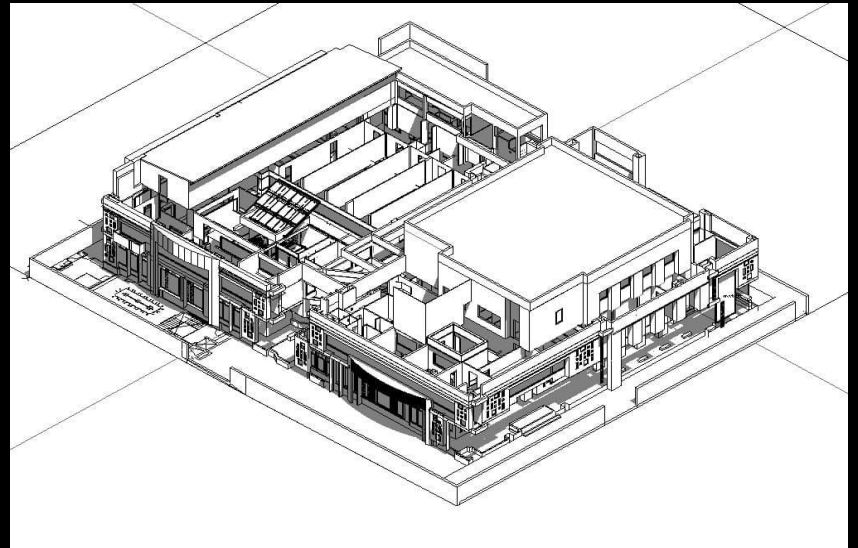
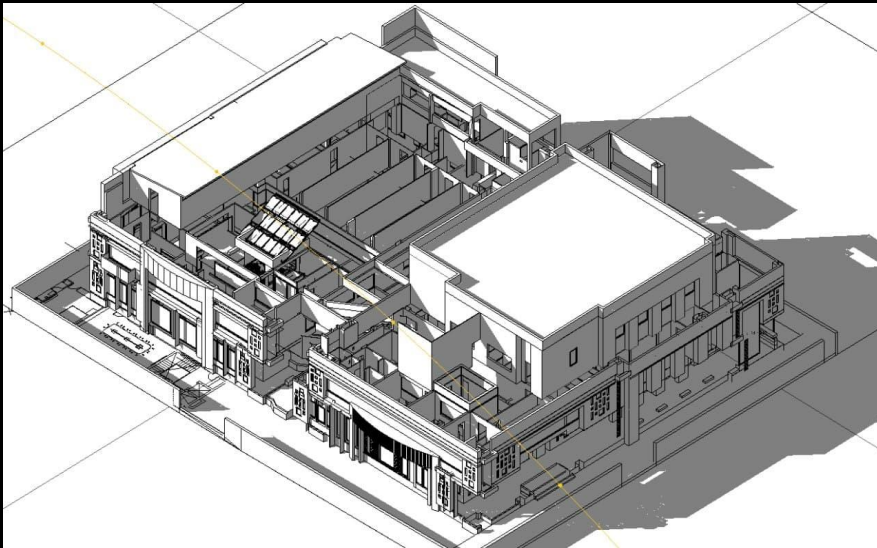
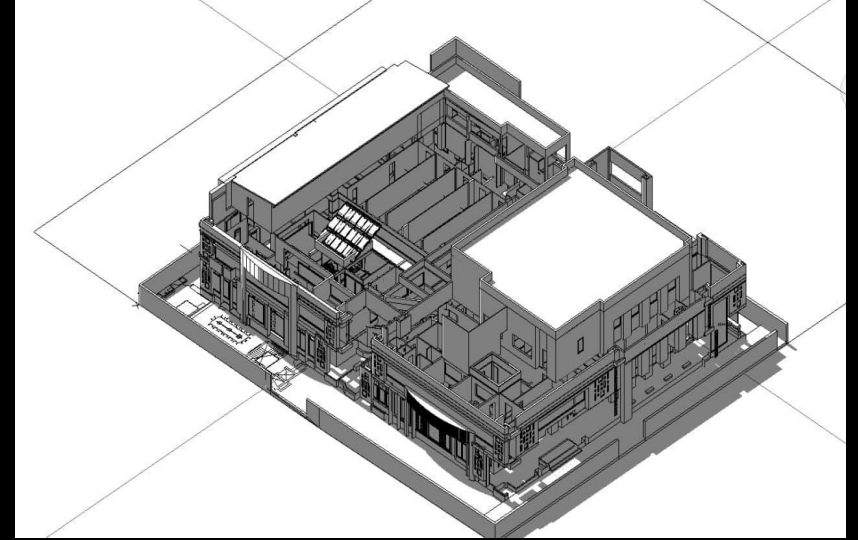
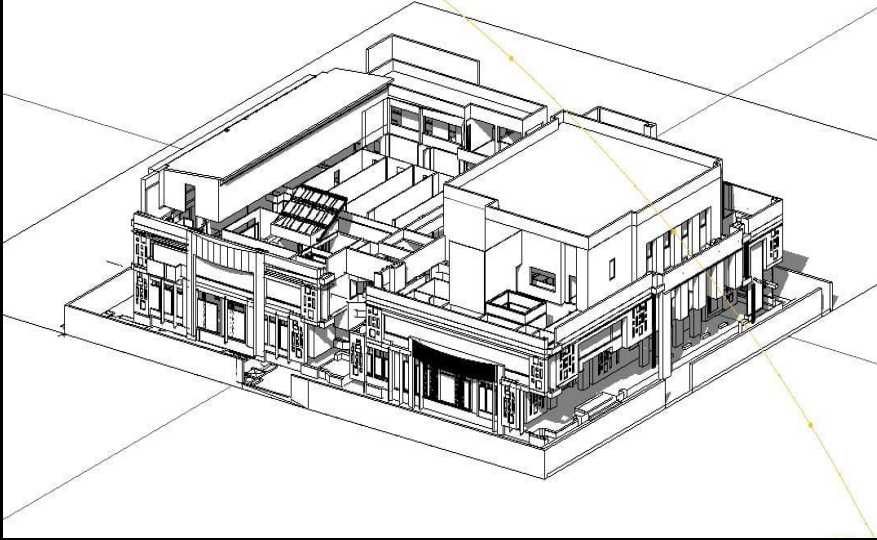
THE GOLDEN LOTUS ON ON WALLS OF THE HALL ARE DONE IN THIKRI WORK LINEAR PATTERNS ARE DESIGNED OVER WALLS WITH THE SAME CRAFT - DONE BY LOCAL ARTISANS.





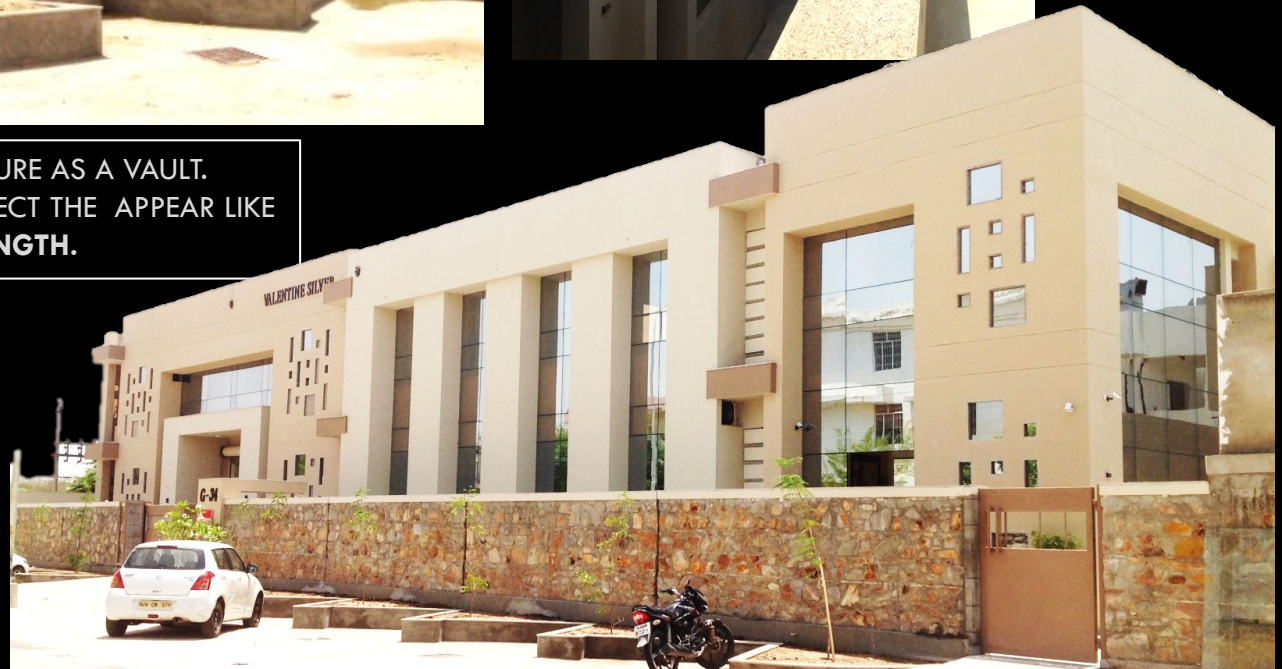








FACTORY DESIGNED TO LOOK AS SECURE AS A VAULT.
STRUCTURE AND BOUNDARY TO PROTECT THE APPEAR LIKE
A ROBUST BUILDING EXHIBITING **STRENGTH**.





CHALLENGE

RENOVATE THE FACADE IN ACCORDANCE WITH THE MODERN THEME OF THE OFFICE INTERIORS, WITHOUT ALTERING EXISTING STRUCTURE.

BEFORE



SOLUTION

THE CANTILEVERS WERE CONVERTED TO JALIS THAT FRAMED WINDOWS AND PROVIDED SHADE.

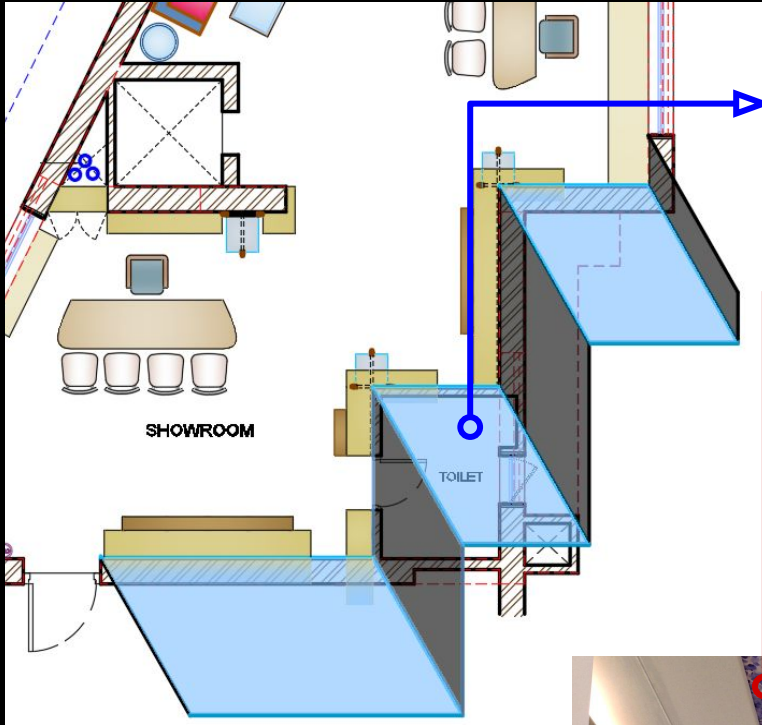
GREENS WERE ADDED IN PLANTERS, WHICH WERE MADE PART OF THE EXISTING STRUCTURE.

AFTER



DISPLAY BOXES- SECURED TO BE
USED ONLY BY THE OWNER.





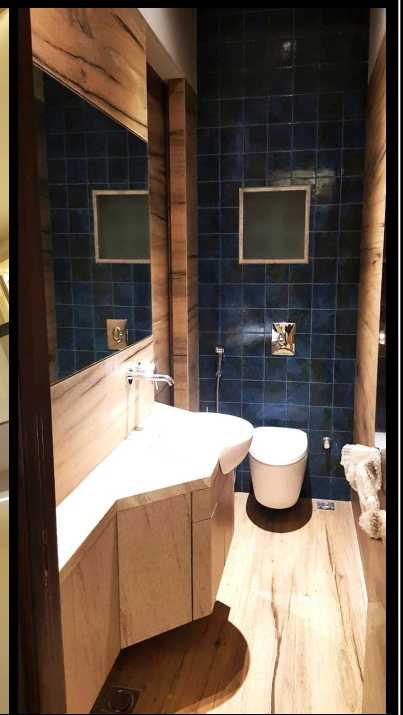
USE OF MIRRORS TO THE MAKE THE SHOWROOM APPEAR BIGGER AND MORE SPACIOUS.

BEGINNING FROM THE CONTRASTING BLUE IDOL OF GANESHA, PLACED AT THE ENTRANCE OF THE OFFICE, THE STREAK OF PAINT ON FALSE CEILING DONE BY A LOCAL ARTIST, TRANSITIONS COLOR SCHEME FROM BLUE TO LIGHT PINK.

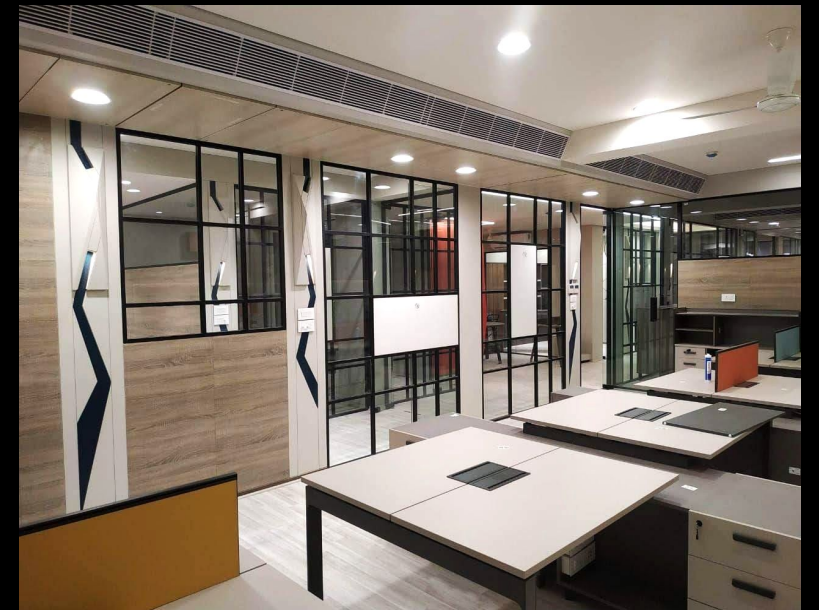


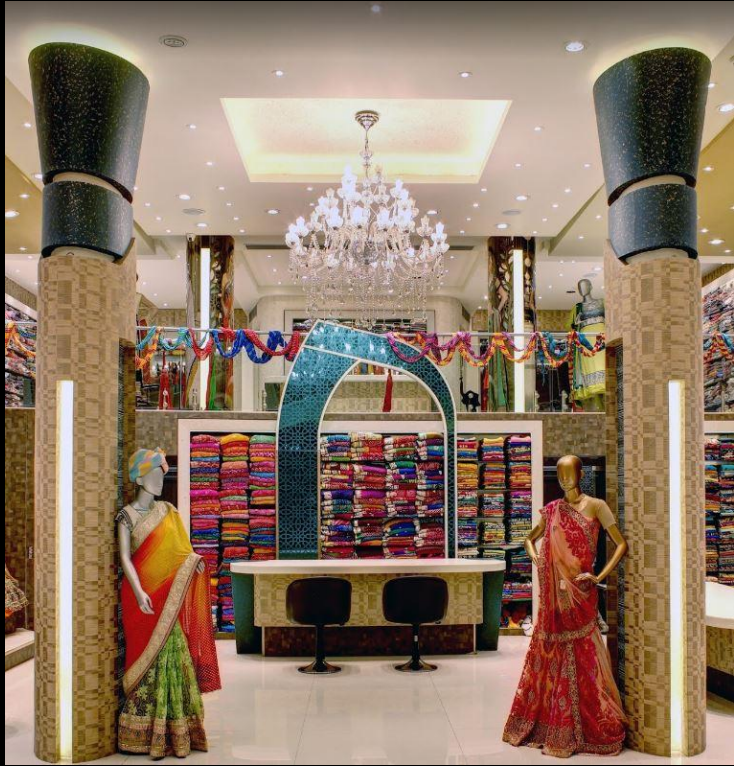
DRAWERS- DESIGNED TO BE OPENABLE WITHOUT HANDLES.

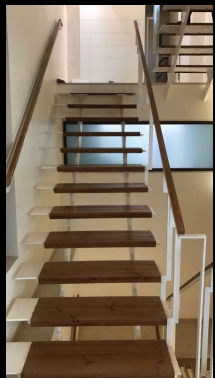


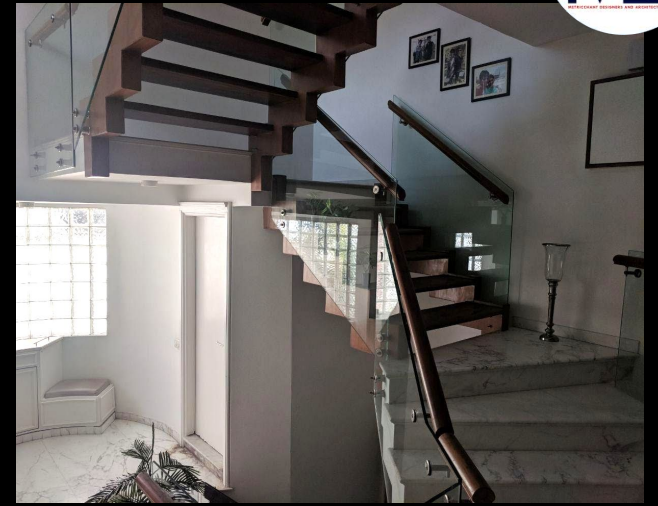


















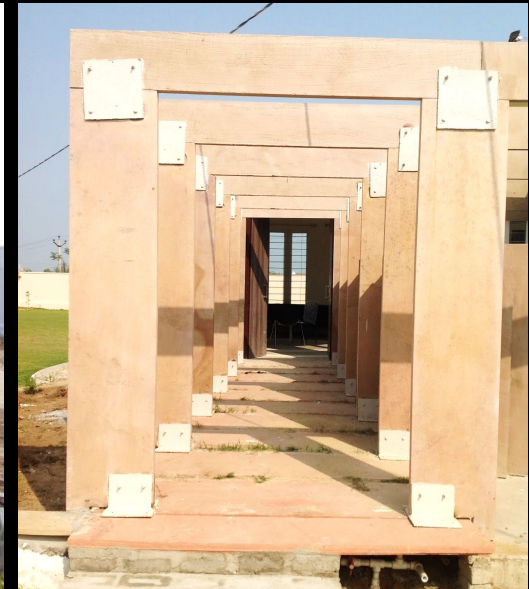


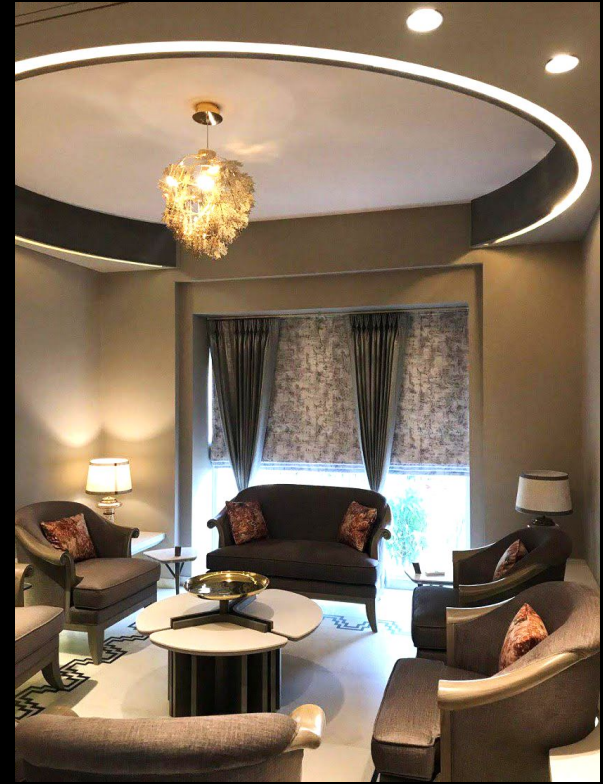
















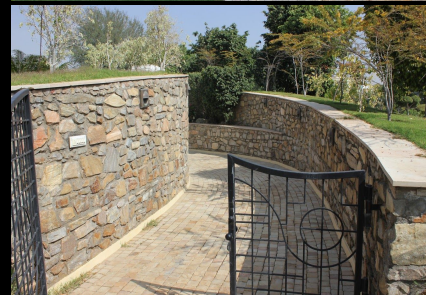
mda. pvt. ltd.

www.metricchants.com

APEKSHA + ROHIT SURENDRA NAGIA

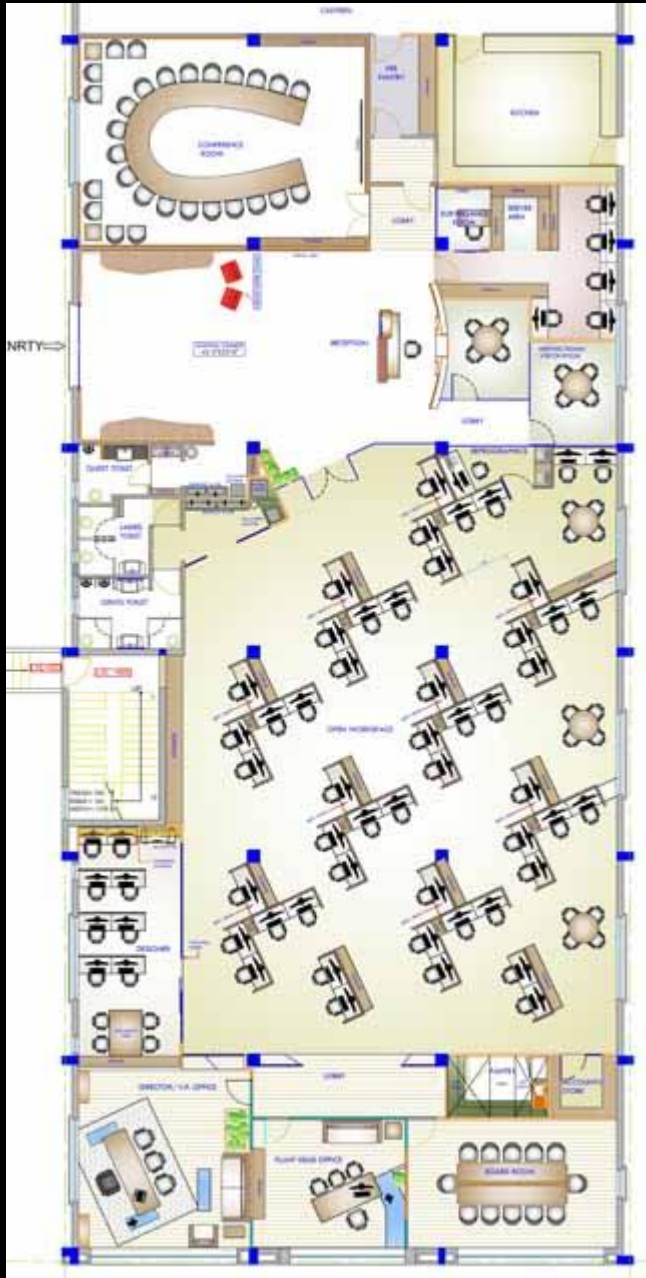






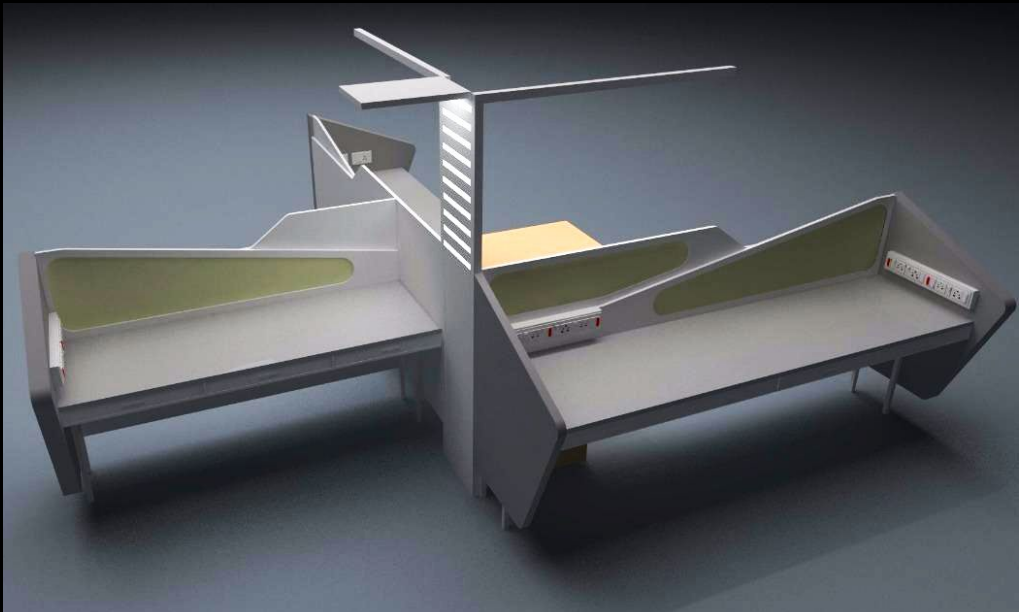






ALL WORK STATIONS FACING NORTH OR EAST.

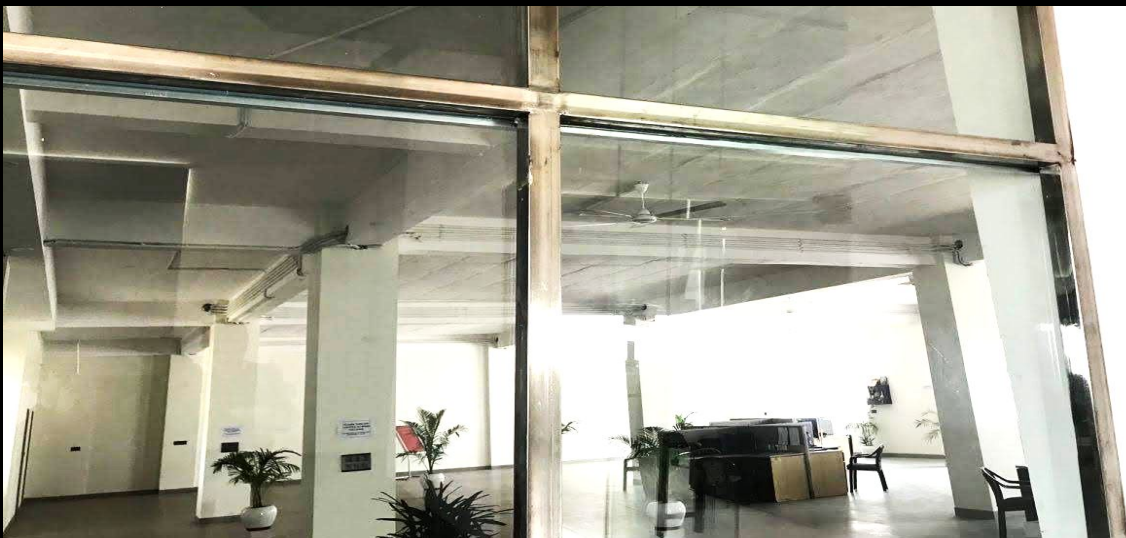
AS, ACCORDING TO VASU, FACING THE NORTH OR EAST WHILE WORKING IS VERY AUSPICIOUS AND MAKES YOU FEEL FRESH. NORTH IS A DIRECTION OF KUBER, THE GOD FOR MONEY, WHILE HAVING A TRADING WORK BUSINESS. SO, WE MANAGED TO PLACE ALL THE WORKSTATIONS NORTH OR EAST.



THE SPACE HAD A VERY LOW CEILING HEIGHT. SO, TWO DECISIONS WERE TAKEN.

1. TO TAKE ALL SERVICES IN A CLUSTERED FORMAT IN THE CIRCULATION AREAS, SO WE REDUCE HEIGHT IN MINIMUM AREA DUE TO FALSE CEILING.
2. KEEP MINIMUM FALSE CEILINGS IN THE WORKSTATION AREAS TO GIVE A FEELING OF LARGENESS.

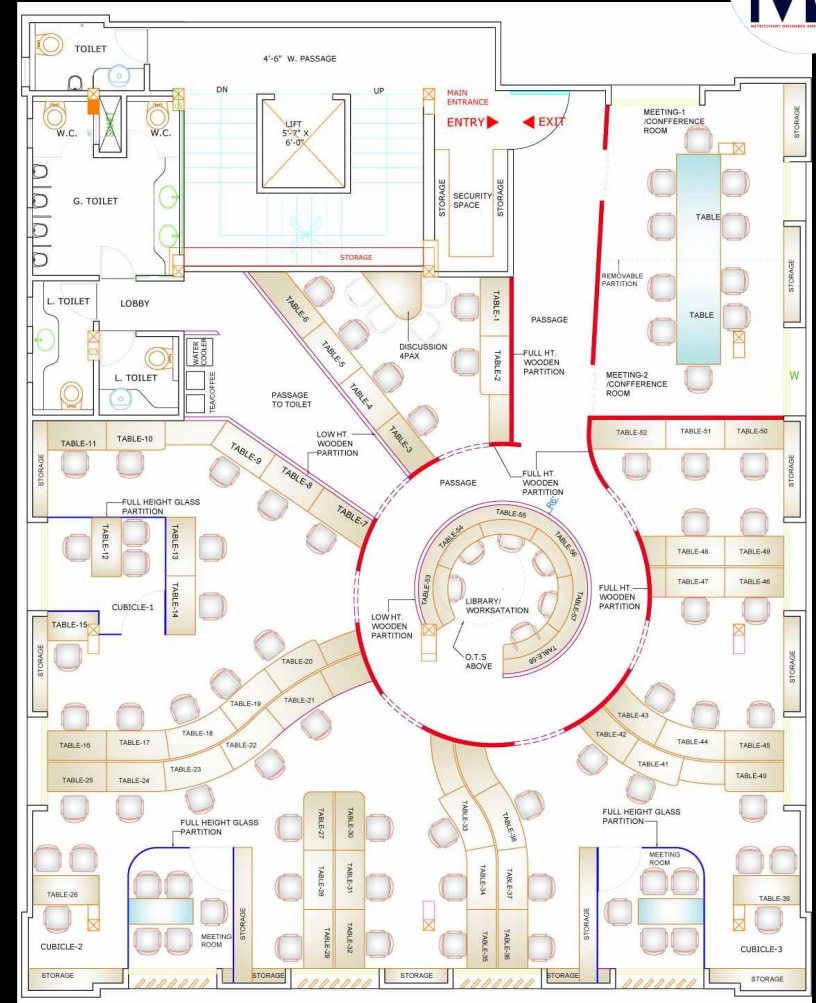
THE CLOSER THE LIGHT SOURCE IS TO THE TABLE TOP, THE MORE ILLUMINATION IT GETS! FOLLOWING THIS PRINCIPLE, WE SAVED ELECTRICITY COST AND EASED THE MAINTENANCE OF THE PLACE.











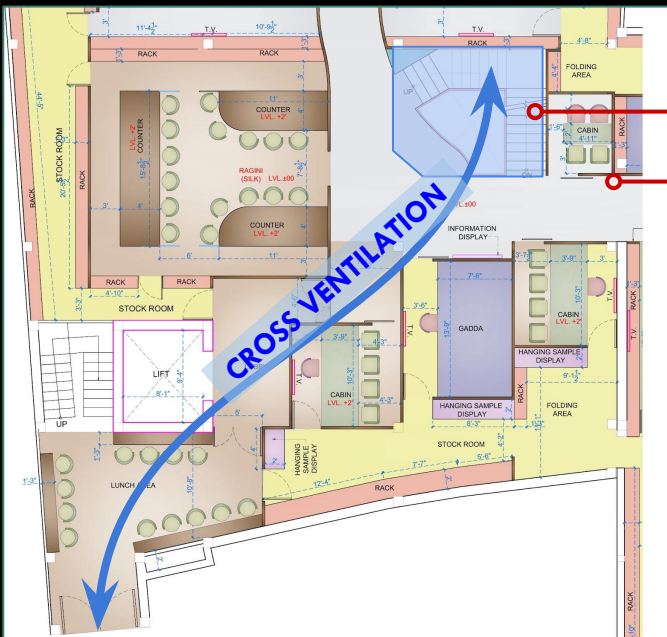
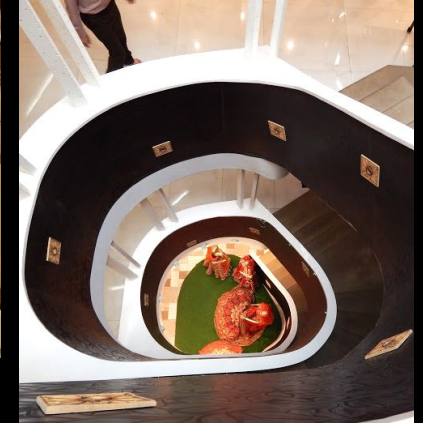
THE LONGITUDINAL WOODEN MEMBERS OFFER MULTIPLE VALUES TO DESIGN:

- STRUCTURAL SUPPORT
- AESTHETICS AND CHARACTER
- CHANNEL FOR CONDUITS IN ELECTRICAL SERVICES



THE TIMBER OFFICE EXHIBITS CONTINUOUS BANDS OF TIMBER THROUGHOUT THE OFFICE PREMISES, MAKING IT A DISPLAY SPACE FOR THE PRODUCT AS WELL.

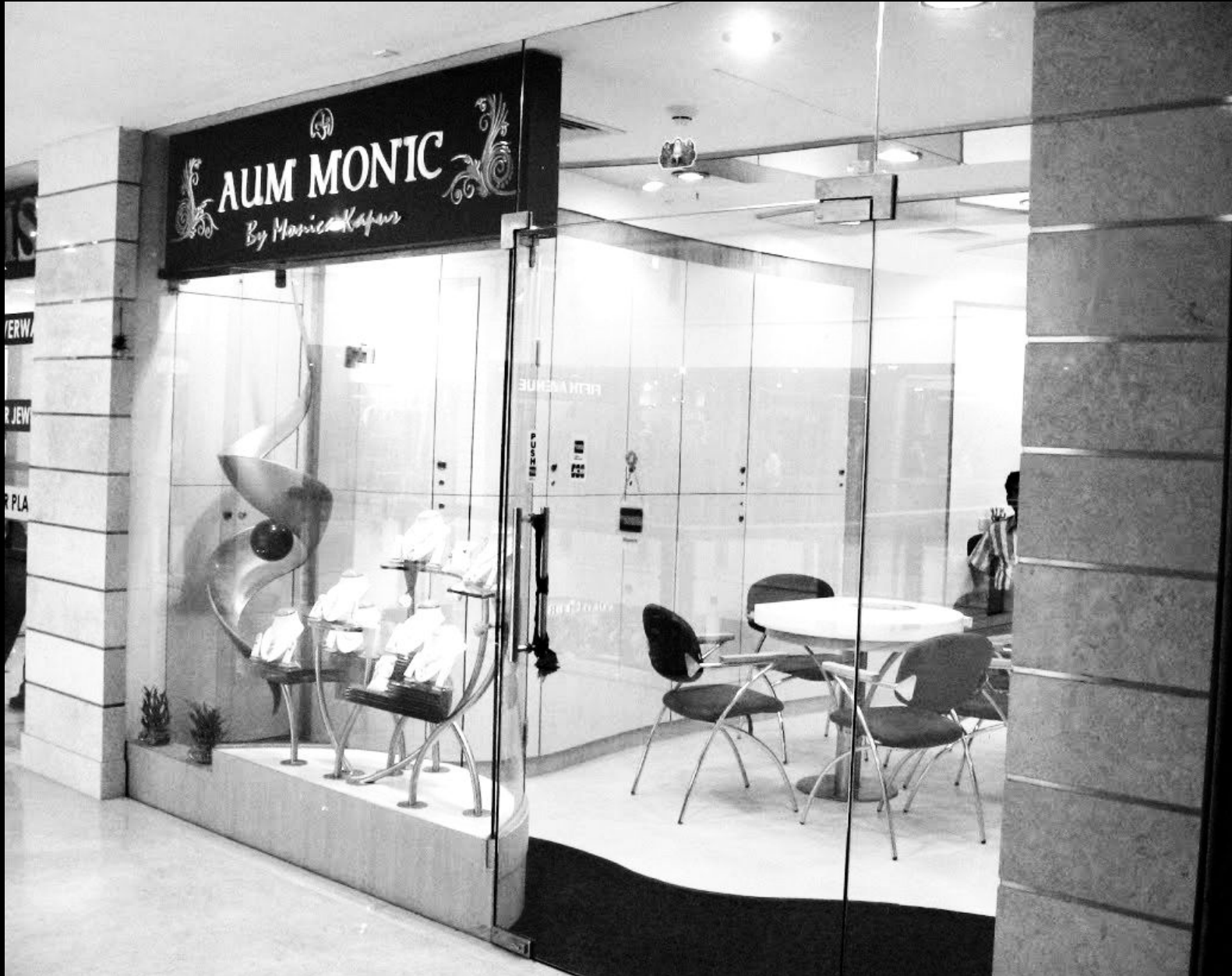




CROSS- VENTILATION THROUGH A SINGLE INDUCED OUTLET - THE STAIRCASE. DESIGNED TO OPTIMISE AIRFLOW IN THE OTHERWISE CONGESTED AREA OF OLD DELHI- BOUND BY STRUCTURES AND NARROW LANES ON ALL SIDES.

TRAPS WIND AND MAKES IT TRAVERSE THE SHOWROOM.



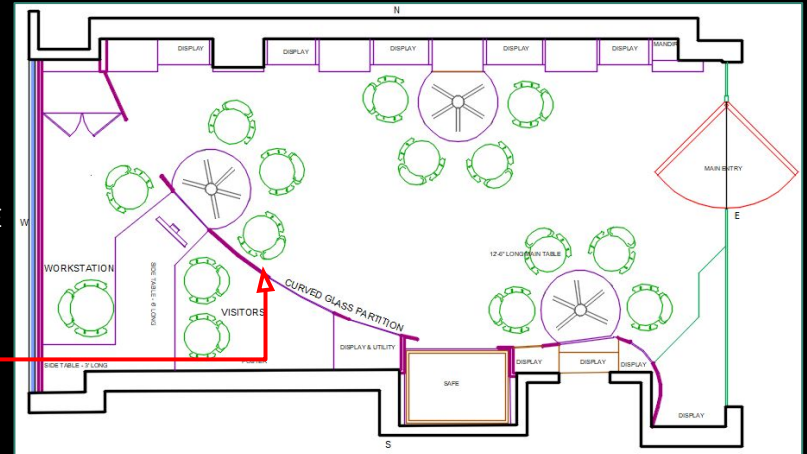




THE DESIGN BLENDS CURVES IN THE SHOWROOM. IT IS ALSO REPRESENTED IN THE DISPLAY SHELF THROUGH FLAMES, ON THE FALSE CEILING WITH CURVED MIRRORS.



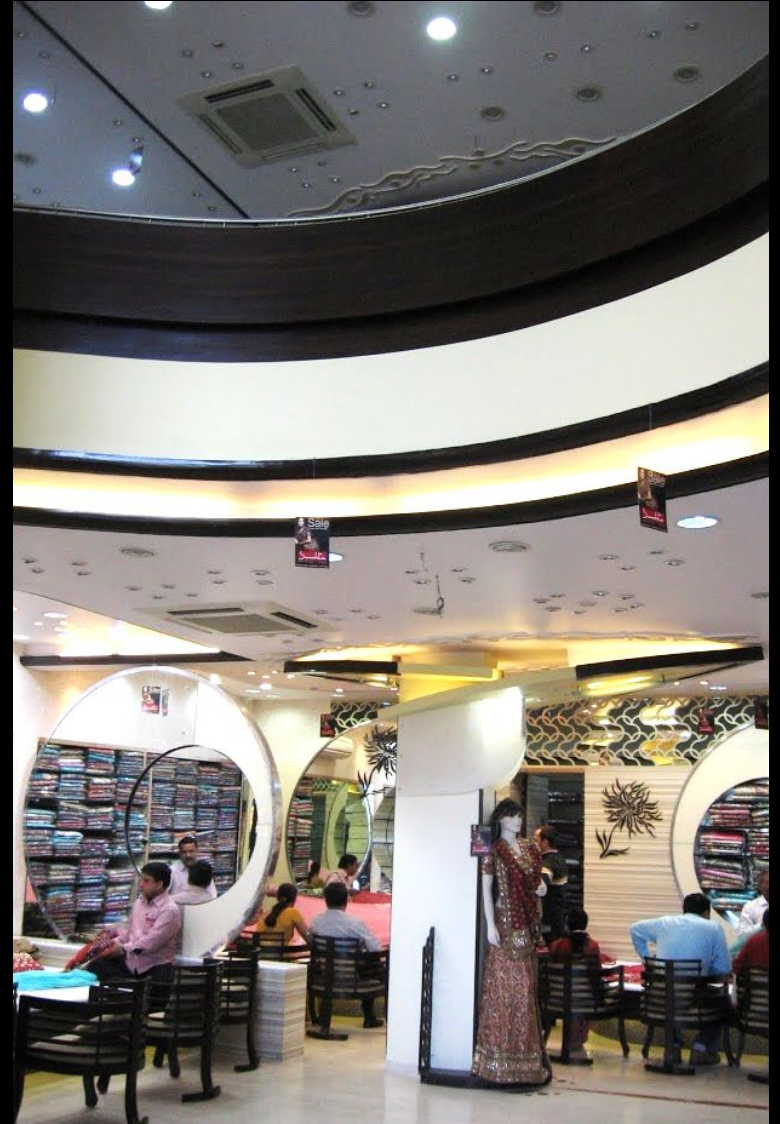
A PARTITION WAS DESIGNED TO ENHANCE THE FUNCTION OF SPACES, IN KEEPING WITH THE RESTRICTIONS OF THE EXISTING STRUCTURE.





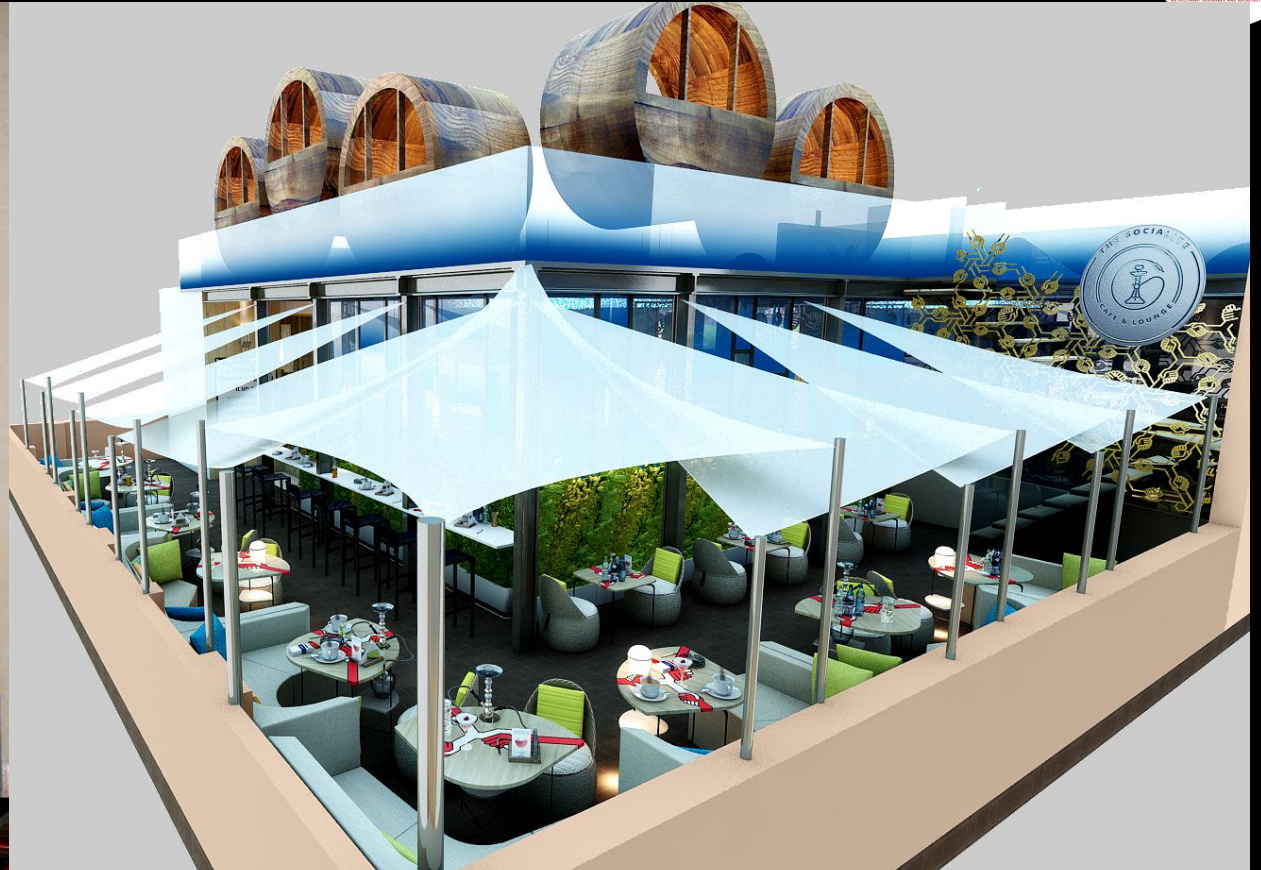




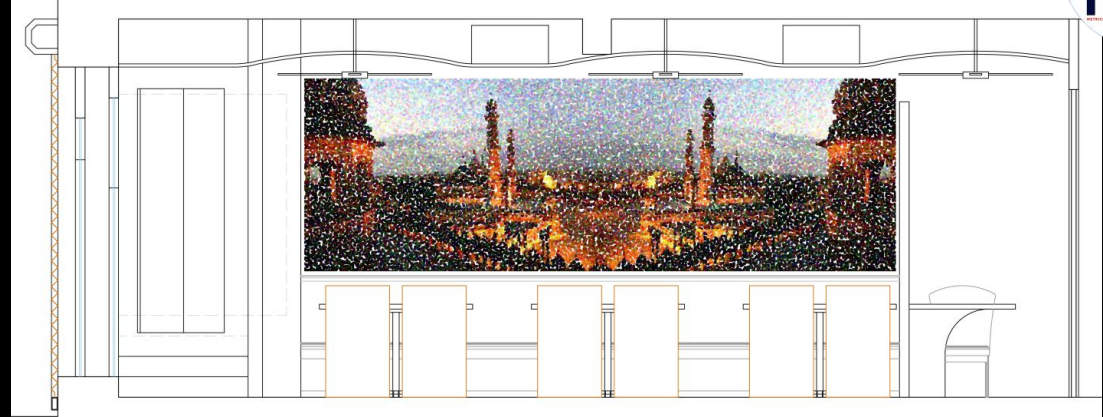




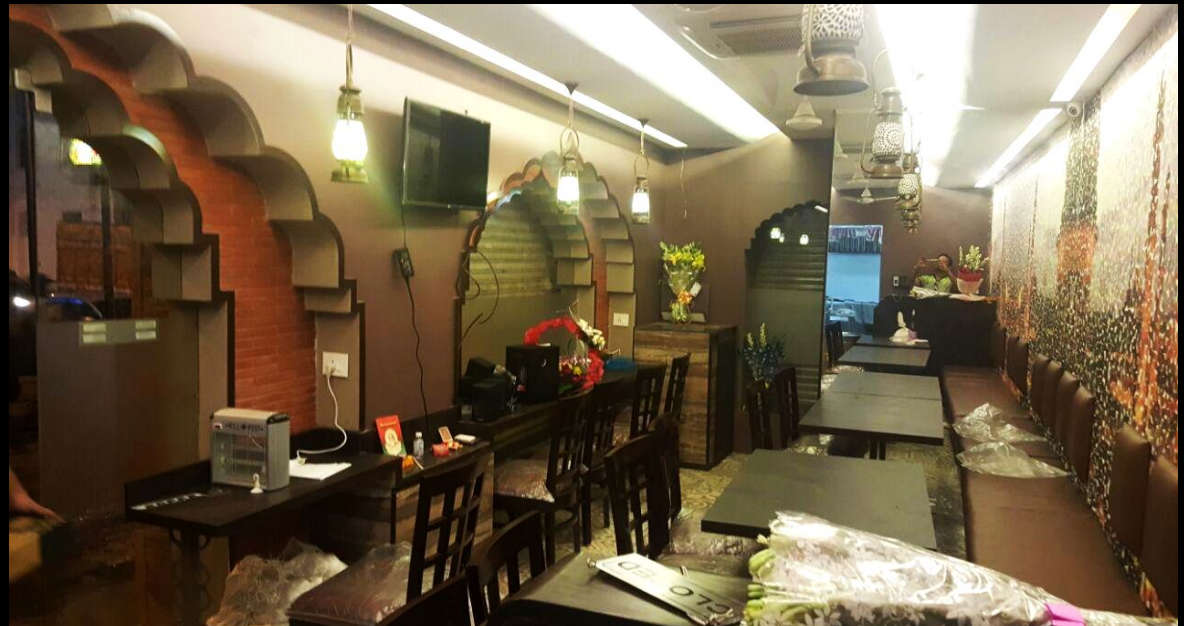








THE ARTWORK ADORNING THE WALL OF THIS RESTAURANT IS CRAFTED TO SUIT THE PEOPLE SITTING AT THE TABLES. FOR EACH INDIVIDUAL SEATING, THE GRAFFITI JUST LOOKS LIKE A DASH OF COLOR DOTTED ON THE SURFACE OF THE WALL. ONLY A FULL VIEW OF THE WALL **REVEALS THE SKYLINE OF OLD DELHI.**

















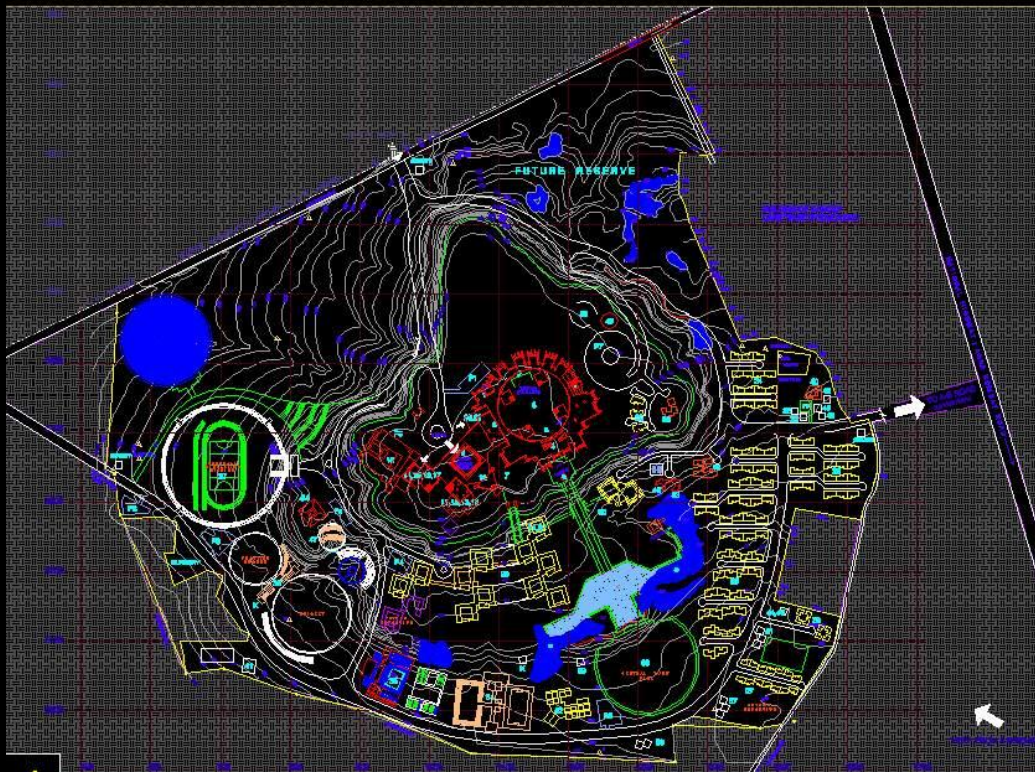




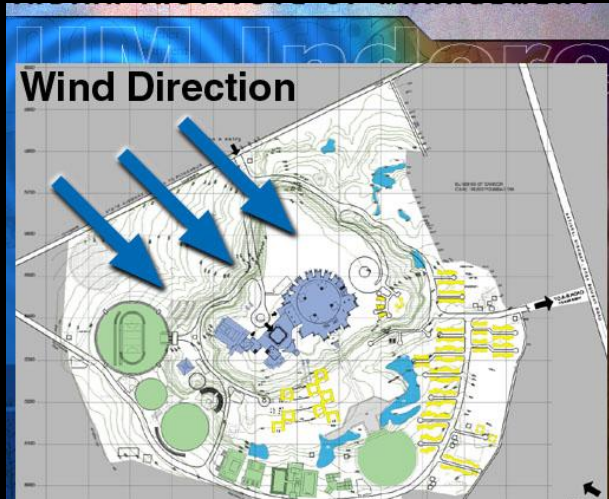
PRACTICAL TRAINING PROJECTS

at SURESH GOEL AND ASSOCIATES

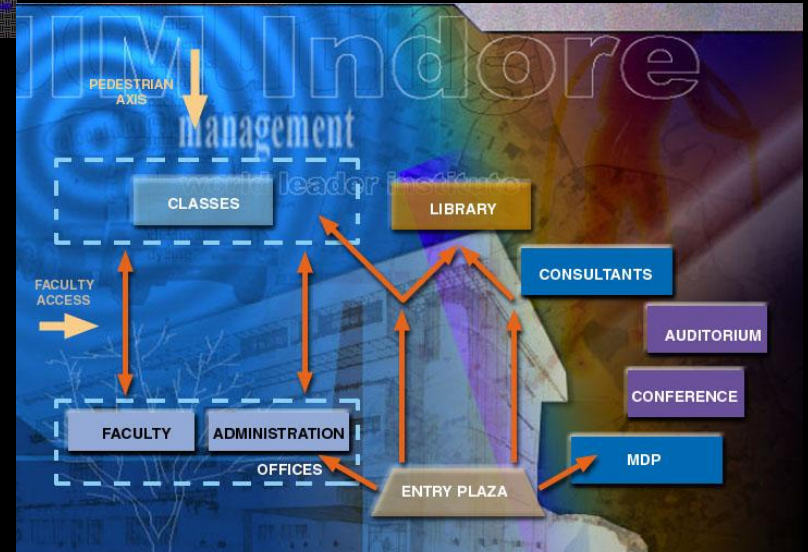




- SITE ON CONTOURS
- PLANNING ALIGNED TO SITE AXIS
- SITE ZONING, IN ACCORDANCE WITH WIND DIRECTION



• SITE ORGANISATION IN ACCORDANCE WITH TOPOGRAPHY AND PRIVACY NEEDS





TYPE-4



▲ Ground Floor Plan
AREA BREAKUP - TYPE 4



▲ First Floor Plan



▲ Front Elevation



Cluster Plan
Type-3 & 4



▲ Ground Floor Plan
AREA BREAKUP - TYPE 3

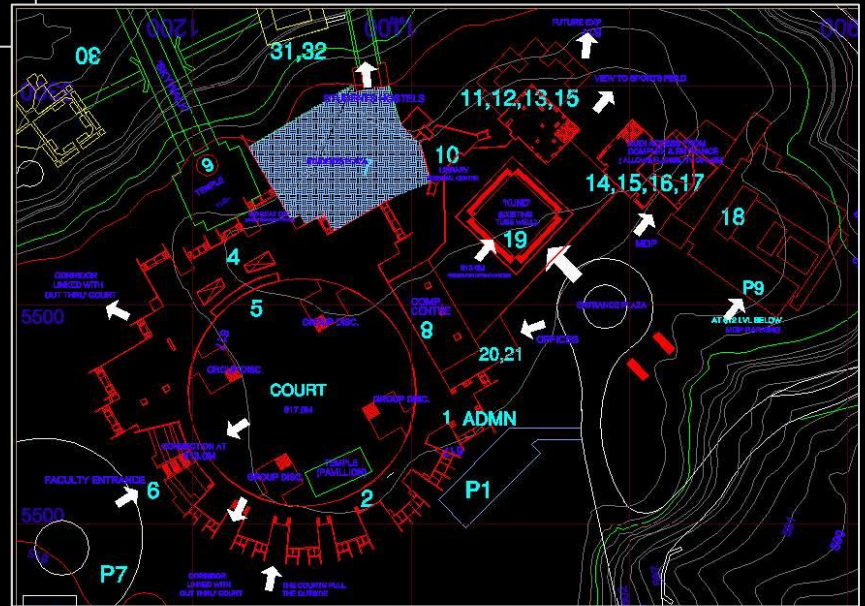


▲ First Floor Plan



▲ Front Elevation

TYPE-3













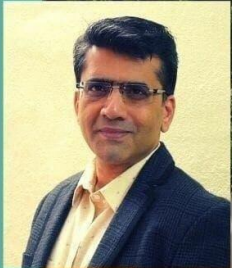
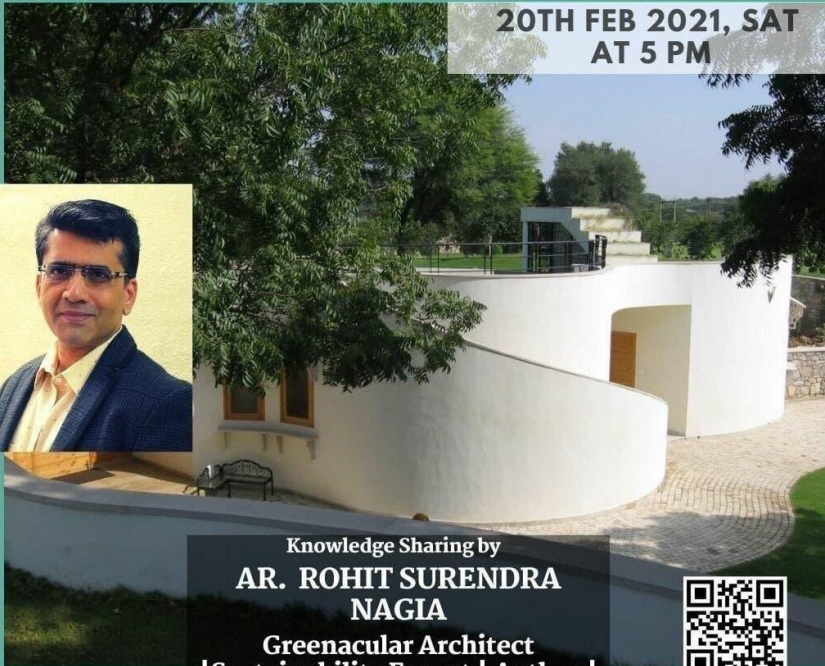
MANOMAV PRESENTS

PRATHAM MEET #20

MANUFACTURING SUSTAINABILITY

3 COFFEE TABLE STORIES TO START WITH..

20TH FEB 2021, SAT
AT 5 PM



Knowledge Sharing by
**AR. ROHIT SURENDRA
NAGIA**
Greenacular Architect
| Sustainability Expert | Author |
Building Performance Strategist



BOOK YOUR SPOT AT
[REBRAND.LY/PRATHAM](https://rebrand.ly/pratham)



4:00 pm



Ar. Rohit Surendra Nagia

Principal Architect
CEO, Metricchant Design
Attributes

SUSTAINABLE DESIGN



JD INSTITUTE OF
FASHION TECHNOLOGY
Welcome to Imagination
jdinstitute.co



Since
1988
Leading Change



WHY DO WE NEED DESIGN?

WEBINAR ON
6 PM | 30th April, 2021



Mrs. Apeksha Nagia
Author,
Green Interior Designer,
Sustainability Catalyst

For more information please contact us

+91-9368447488 | info@indecampus.com | www.indecampus.com

@Indecampus | @indecampus | @IndeCampus

Connect || Explore || Collaborate

Eldrok India Architecture Summit
Leela Ambience, Gurugram, 19 February 2021



#Panel- Eco-Friendly & Tech-Enabled Intelligent Buildings - Products, Trends and use of Technology



Suparna Bhalla
Principal Architect
Abaxial Design



Neeraj Manchanda
Managing Partner
Neeraj Manchanda Associates



Sandeep Singh
Principal Architect
Arc10 Design Consultants



Ravideep Singh
Associate Director
Creative Designer Architects



Abhigyan Neogi
Founder & Principal Architect
Chromed Design Studio



Uttav Gupta
Partner
Creators Architects



Mohd Amin Nayyar
Director
ANA Design Studio Pvt Ltd



Rohit Nagia
Director
Metricchant Design Associates



Avtar Singh Bhullar
National Sales Manager
MDF/PB, Century Prowd

For more information visit us at: www.eldrok.com || www.eldrok.com/Architecture

TEAM MDAPL

RASHMI SAWNERKAR
ADMIN HEAD/EA



AR. ROHIT SURENDRA NAGIA
PRINCIPAL ARCHITECT



IDR. APEKSHA NAGIA
PRINCIPAL INTERIOR DESIGNER



ABDUL QAYYUM
SENIOR ARCHITECT



KHUSHAL NEGI
INTERIOR DESIGNER



SANDEEP TANWAR
ARCHITECT



ANKITA SAHARIA SINHA
SENIOR INTERIOR DESIGNER



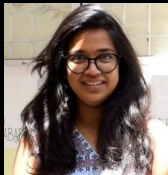
DEEPAK ARORA
INTERIOR DESIGNER



CHETNA GUPTA
ARCHITECT



ANANYA NAYAK
ARCHITECT



MONIKA TYAGI
ADMIN HEAD/EA



MOHD. AMIR
ARCHITECT



ANKITA SEHRAWAT
ARCHITECT



SONU KUMAR
ARCHITECT





CONSULTANTS

STRUCTURE CONSULTANTS

MR. ANIL K. AGARWAL

A K. B. PROJECTS
PVT. LTD. GURGAON

MR. KK SHARMA

MANUKA STRUDA PVT.
LTD. C-SCHEME, JAIPUR

MR. KAPIL SARAOGI

K D DESIGN GROUP
TONK ROAD, JAIPUR

MECHANICAL, ELECTRICAL, PLUMBING CONSULTANTS

ER. S.C. MEHTA

SUN ENTERPRISES,
NEW DELHI

MR. DEEPAK KHOSLA

DEEPAK ASSOCIATES,
NEW DELHI

TECHNIE ENGINEERS

MR. SANJAY VAJPAYEE

CUBE MEP, JAIPUR



CONTACT DETAILS

Active Alumni at

- Blue bells School, Delhi
- CEPT, Ahmedabad
- Rahul Jain-Business Coaching India
- Sanjeev jain - CEOITBOX
- Rakesh Sharma - RSMS Consultant Pvt. Ltd.
- Akshar Yadav - Get overbooked



MDA PVT. LTD.
209, DDA-SFS,
SECTOR- 22, PKT-1,
DWARKA PH-1,
NEW DELHI 110077
INDIA

011- 28051343
011- 45025330

e-mail: info@metricchants.com
Web: www.metricchants.com